

Model

CZSR8002-2A2AT

CZSR8002-2A2AT is suitable for the application of E-Stop button and safety gate, with 2 safety output contacts (instantaneous) and 2 safety output contacts (delayed). It can be operated in single or double channel mode, manual or automatic reset, and the function of monitoring the short circuit between channels.

Product Features

- Single or double channel mode
- Manual or automatic reset
- Monitoring the short circuit between channels

Specification

Power

- Supply voltage: 24V DC
- Voltage tolerance: 0.85 ~ 1.1
- Current consumption: ≤130mA (24V DC)

Input

- Input current: ≤50mA (24V DC)
- Cable resistance: ≤15Ω
- Input devices: E-STOP Button, Safety Gate

Output

- Number of contacts: 2NO + 2NO(t)
- Contact material: AgSnO₂
- Contact type: Force guided
- External contact fuse protection: 10A gL/gG, NEOZED(NO)
- Utilisation category (EN60947-5-1): AC-15, 3A/230V; DC-13, 3A/24V
- Mechanical endurance: Over 10⁷ time

Times

- Switch-on delay: with automatic reset: ≤300ms; with manual reset: ≤150ms
- Delay-on de-energisation: with E-STOP: ≤30ms with E-STOP(delayed): 0.1s ~ 3s(factory set as 3s) with power failure: ≤100ms
- Recovery time: after E-STOP: ≤30ms after power failure: ≤100ms
- Supply interruption before de-energisation: 20ms

Environmental Characteristics

- EMC: In accordance with EN60947, EN61000-6-2, EN61000-6-4
- Vibration frequency: 10Hz~55Hz; Vibration amplitude: 0.35mm
- Ambient temperature: -20°C~+60°C
- Storage temperature: -40°C~+85°C
- Relative humidity: 10%~90%

Insulation characteristic

- Overvoltage category: III
- Pollution degree: 2
- Rated insulation voltage: 250V AC
- Rated impulse voltage: 4000V (1.2/50us)
- Dielectric strength: 1500V AC, 1min
- Clearance and creepage: In accordance with EN 60947-1

Safety

- Safety integrity level (SIL): SIL3
- Performance level (PL): PLe
- Category (Cat.): Cat.4



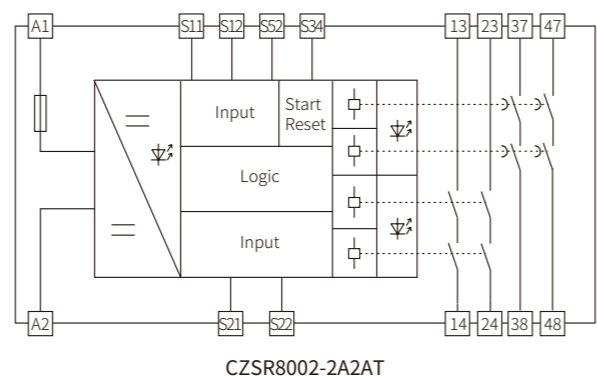
SIL3
IEC61508

PLe
Cat.4
EN/ISO13849

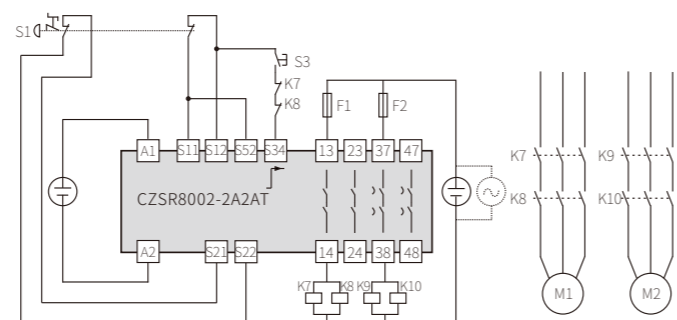


Dimensions(L×H×W): 114.5mm×99.0mm×22.5mm

Block Diagram



Typical Application



- Dual channel E-stop buttons input
- Short circuit monitoring
- Manual reset with EDM
- Up to Cat. 4

S1:E-STOP
S3:Reset button
K7,K8,K9,K10:Contactors
F1,F2:External fuse protection
M1,M2:Motor

Model

CZSR8002-2A2AT(M)

CZSR8002-2A2AT(M) is suitable for the application of E-Stop button and safety gate, with 2 safety output contacts (instantaneous) and 2 safety output contacts (delayed). It can be operated in single or double channel mode, manual or automatic reset, and the function of monitoring the short circuit between channels.

Product Features

- Single or double channel mode
- Monitored manual reset
- Monitoring the short circuit between channels

Specification

Power

- Supply voltage: 24V DC
- Voltage tolerance: 0.85 ~ 1.1
- Current consumption: ≤130mA (24V DC)

Input

- Input current: ≤50mA (24V DC)
- Cable resistance: ≤15Ω
- Input devices: E-STOP Button, Safety Gate

Output

- Number of contacts: 2NO + 2NO(t)
- Contact material: AgSnO₂
- Contact type: Force guided
- External contact fuse protection: 10A gL/gG, NEOZED(NO)
- Utilisation category (EN60947-5-1): AC-15, 3A/230V; DC-13, 3A/24V
- Mechanical endurance: Over 10⁷ time

Times

- Switch-on delay: with manual reset: ≤150ms
- Delay-on de-energisation: with E-STOP: ≤30ms with E-STOP(delayed): 0.1s ~ 3s(factory set as 3s) with power failure: ≤100ms
- Recovery time: after E-STOP: ≤30ms after power failure: ≤100ms
- Supply interruption before de-energisation: 20ms

Environmental Characteristics

- EMC: In accordance with EN60947, EN61000-6-2, EN61000-6-4
- Vibration frequency: 10Hz~55Hz; Vibration amplitude: 0.35mm
- Ambient temperature: -20°C~+60°C
- Storage temperature: -40°C~+85°C
- Relative humidity: 10%~90%

Insulation characteristic

- Overvoltage category: III
- Pollution degree: 2
- Rated insulation voltage: 250V AC
- Rated impulse voltage: 4000V (1.2/50us)
- Dielectric strength: 1500V AC, 1min
- Clearance and creepage: In accordance with EN 60947-1

Safety

- Safety integrity level (SIL): SIL3
- Performance level (PL): PLe
- Category (Cat.): Cat.4



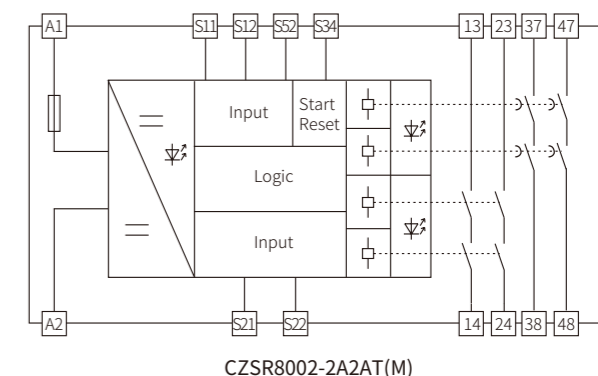
SIL3
IEC61508

PLe
Cat.4
EN/ISO13849

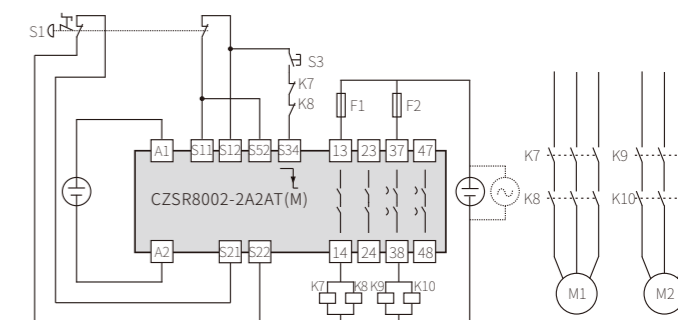


Dimensions(L×H×W): 114.5mm×99.0mm×22.5mm

Block Diagram



Typical Application



- Dual channel E-stop buttons input
- Short circuit monitoring
- Manual reset with EDM
- Up to Cat. 4

S1:E-STOP button
S3:Reset button
K7,K8,K9,K10:Contactors
F1,F2:External fuse protection
M1,M2:Motor